

**CERTIFIED RECORD OF LAND CORNER MONUMENTATION**

History of original corner establishment: \*  
The corner was established by H. Gradon in 1881 under  
Contract No. 383. The original notes state:

DIAGRAM  
T10S R32E  
1/4  
S261S25

North between Secs 25 & 26  
40.00 Set stone 10x8x6 for 1/4 Sec cor from which  
A pine 40 in dia bears S70°E 64 lks dist  
A pine 24 in dia bears S45°W 142 lks dist

Description of corner evidence found:  
Found a 10x8x6 unmarked stone in a mound of stone.  
A 38" Pine snag bears S67°21'E 39.3 ft (S70°E 64 lks) visible scribing.  
Roothole of a windfall pine bears S46°W 98 ft (S45°W 142 lks).

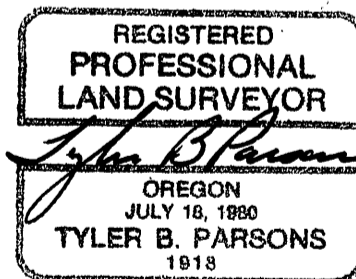
Description of monument and accessories I establish to perpetuate the  
original location of this corner:  
Set a 2-1/2x30" aluminum monument 22" in the ground in a  
mound of stone.  
New BTs:  
An 11" Pine bears S 71°53'W 9.8 ft scribed 1/4S26BT.  
A 9" Juniper bears N82°19'E 37.1 ft scribed 1/4S25BT.

T10S R32E  
1/4  
S261S25  
PLS1918  
1989

New BTs have 3/4" brass washers marked PLS1918 attached to the BT  
blaze, faces and bands painted with red tree marking paint, and  
BT tags and Attention or Land Survey Monument signs. A steel fence  
post with Attention or Land Survey Monument sign is driven  
approximately 3-5 feet from the corner.

Sun Cadastral Survey  
Contract No.: 53-04H1-7-4011  
Project No.: 8722LB  
Field Book: 7-67  
Work Accomplished: 6/3/89  
Witnesses: Louise Parsons

PARSONS SURVEYING  
1915 S.E. Stone Street  
Corvallis, OR 97333  
(503) 752-7515



Office of COUNTY SURVEYOR County of GRANT  
State of OREGON, I hereby certify that the within instrument was filed in this office  
for record on the 10 day of Aug, 19 89

Robert D. Bayett by \_\_\_\_\_  
(COUNTY OFFICIAL) (DEPUTY)